

# PROGRESS PLOT

## OCTOBER 17, 2017

NOT FOR CONSTRUCTION, PUD OR PERMIT SUBMITTAL  
FOR MEETING AND PRE-PUD DISCUSSIONS

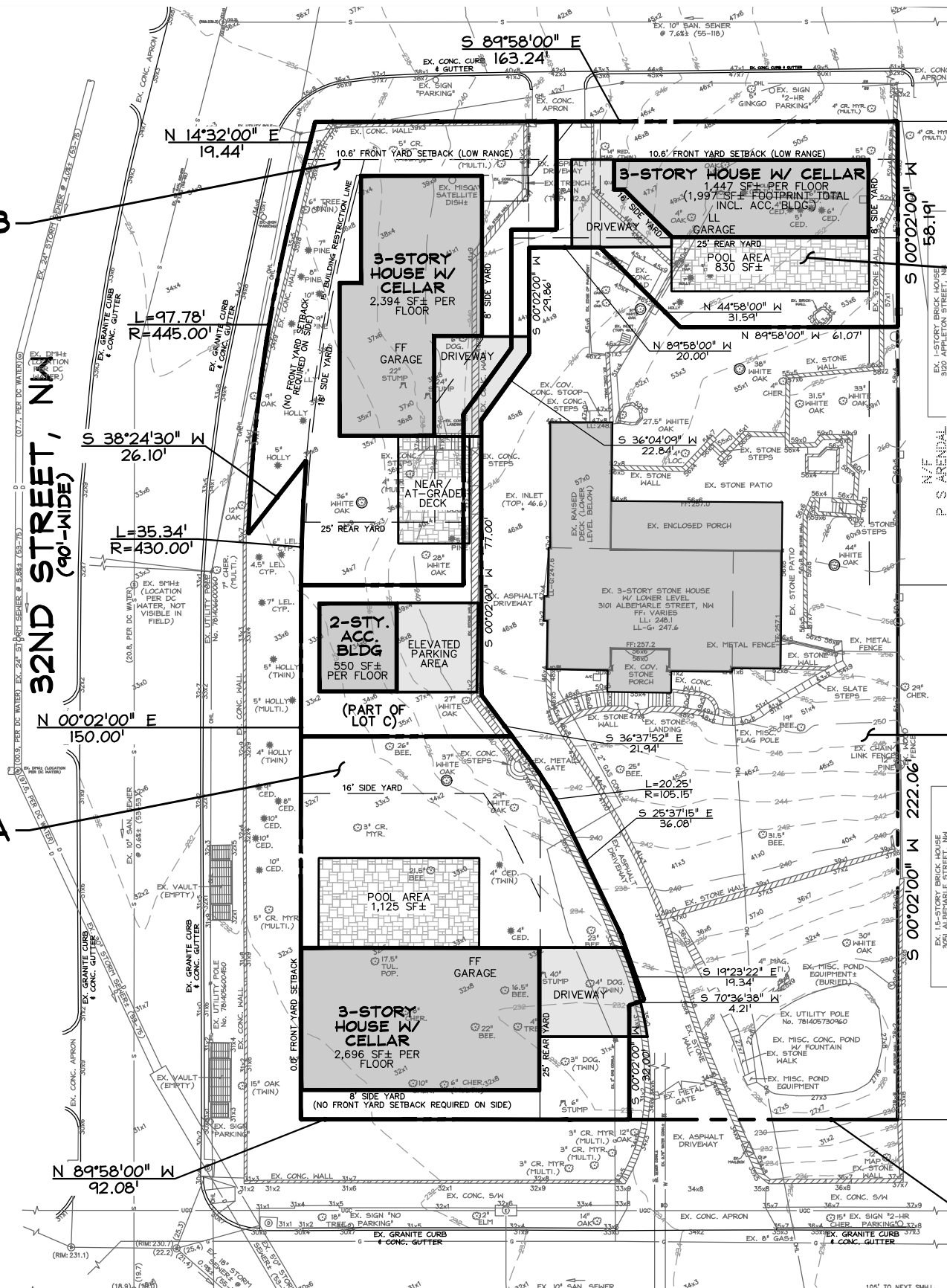
PROP. LOT B  
SQUARE 2041  
8,014 SF±

PROP. LOT A  
SQUARE 2041  
8,998 SF±

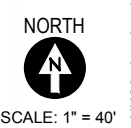
APPLETON STREET, NW  
(60'-WIDE)

PROP. LOT C  
SQUARE 2041  
7,735 SF±

LOT 23  
SQUARE 2041  
22,791 SF±

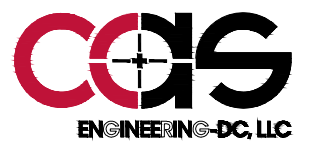


ALBEMARLE STREET, NW  
(90'-WIDE)

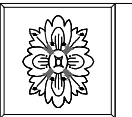


SOAPSTONE  
VALLEY  
VENTURES

CHRISTIAN ZAPATKA  
ARCHITECT, PLLC  
1656 33rd STREET NW  
WASHINGTON DC 20007  
202 333 2735



CAS Engineering-DC, LLC  
Attn: David C. Landsman, PE, Prof. LS  
1001 Connecticut Avenue, NW, Suite 401  
Washington, DC 20036  
(202) 393-7200 phone  
david@cas-dc.com



DCA Landscape Architects, Inc.  
1315 Wisconsin Avenue, NW  
Washington, D.C. 20007  
202/337-1160 (tel.) 202/337-4630 (fax)

3101 ALBEMARLE ST, NW  
WASHINGTON D.C. 20008  
SQ : 2041 LOT : 0839



SUBMISSION:	DRAWING TITLE:	PAGE NUMBER:
	Conceptual By-Right Site Development Plan	C.XX
DATE: OCTOBER 17, 2017		SCALE: 1" = 40'