

Park Van Ness 4455 Connecticut Avenue, N.W.

Construction Management Community Briefing



December 11, 2013

Agenda

- Purpose of Meeting
- Introductions
- Site & Work Rules
- Project Schedule Overview
- Site Utilization
- Current Traffic Control Plan (TCP)
- Questions / Discussion

Purpose of Meeting

- To have a clear, reasonable, and practical plan for pedestrian safety throughout the 4455 Connecticut Avenue, N. W. construction process.
- To present a general overview of the construction phases for 4455 Connecticut Avenue, N. W.
- To provide an understanding of the District of Columbia policy, programs, and criteria applied to traffic control and pedestrian safety.

Site & Work Rules

- On-site Presence & Notification
 - Clark full time, on-site management staff
 - On-site trailers for Clark and B.F. Saul
 - Posted emergency numbers
- Work Hours
 - Monday thru Friday 7:00am – 7:00pm
 - Saturday 7:00am – 7:00pm
 - Holidays – As prescribed by DCRA
- Deliveries / Lane Closure
 - 9:30am – 3:30pm

Site & Work Rules

- Construction Parking
 - No parking on-site (other than construction equipment)
 - Metro is recommended primary means of transportation
 - Nearby parking garages may be utilized
- Dust & Debris Control
 - Erosion and Sediment Control as approved by DDOE, EPA
 - Water to be used during demolition to control dust
 - Truck washes for equipment leaving site
 - Daily monitoring of Erosion and Sediment Control measures

Project Milestones

Raze	December 1, 2013 – June 1, 2014
Concrete Construction	June 1, 2014 – May 15, 2015
Facade Construction	March 15, 2015 – July 15, 2015
Sitework	June 1, 2015 – November 1, 2015
Project Completion	November, 2015

Site Utilization Plan – Raze & Excavation

- Scheduled Start: December 1, 2013
- Scheduled Finish: June 1, 2014
- Approximate Duration: 6 months



Site Utilization Plan – Concrete Construction

Final TCP for this phase to be determined.



Site Utilization Plan – Facade Construction

Final TCP for this phase to be determined.



CURRENT TRAFFIC CONTROL PLAN

4455 Connecticut Ave. NW

FOR RAZE ONLY
APPROXIMATE DURATION = 6 MONTHS

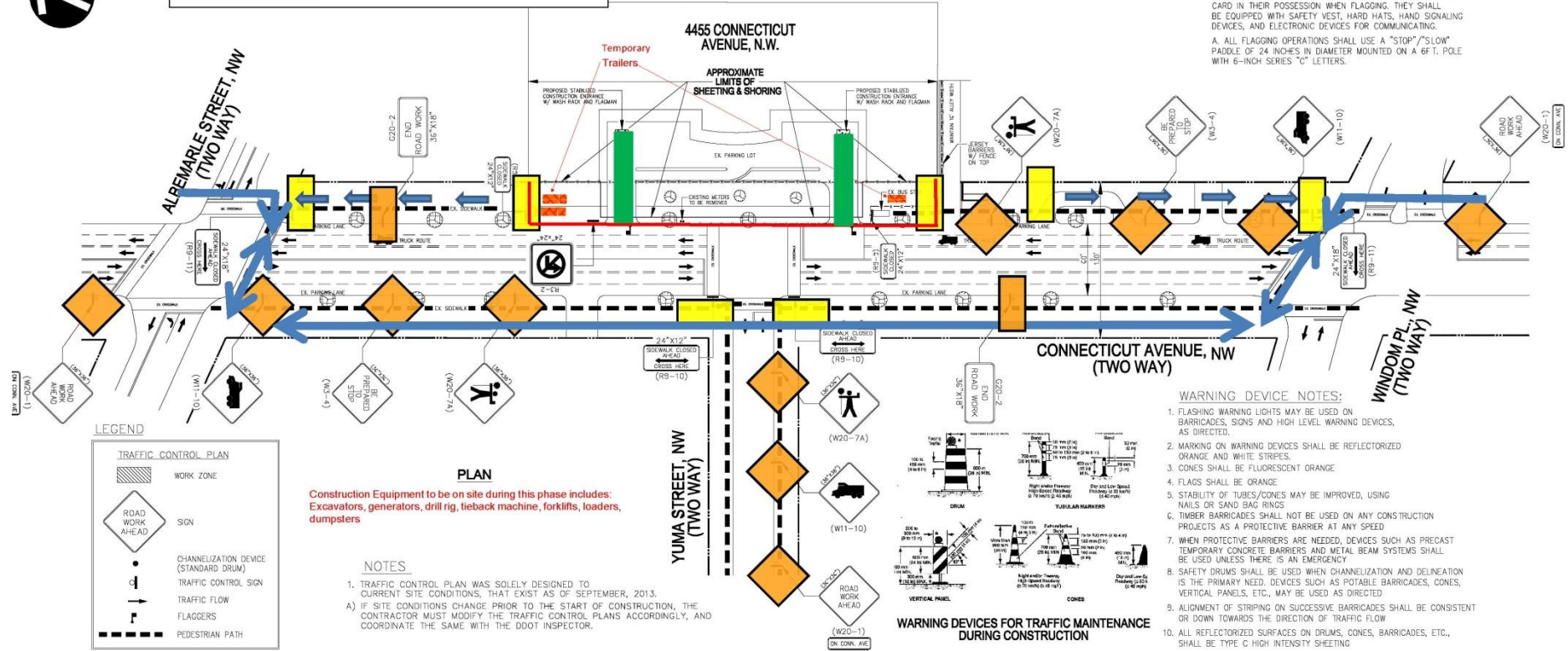
FLAGGING NOTE

- CONTRACTOR SHALL PROVIDE FLAGGING OPERATIONS FOR CONDITIONS DEEMED NECESSARY BY SELF OR DDOT. ALL FLAGGERS MUST BE CERTIFIED AND HAVE THEIR CERTIFICATION CARD IN THEIR POSSESSION WHEN FLAGGING. THEY SHALL BE EQUIPPED WITH SAFETY VEST, HARD HATS, HAND SIGNALING DEVICES, AND ELECTRONIC DEVICES FOR COMMUNICATING.
 - A. ALL FLAGGING OPERATIONS SHALL USE A "STOP"/"SLOW" PADDLE OF 24 INCHES IN DIAMETER MOUNTED ON A 6 FT. POLE WITH 6-INCH SERIES "C" LETTERS.

WARNING DEVICE NOTES:

- FLASHING WARNING LIGHTS MAY BE USED ON BARRICADES, SIGNS AND HIGH LEVEL WARNING DEVICES, AS DIRECTED.
- MARKING ON WARNING DEVICES SHALL BE REFLECTORIZED ORANGE AND WHITE STRIPES.
- CONES SHALL BE FLUORESCENT ORANGE.
- FLAGS SHALL BE ORANGE.
- STABILITY OF TUBES/CONES MAY BE IMPROVED, USING NAILS OR SAND BAG RINGS.
- TIMBER BARRICADES SHALL NOT BE USED ON ANY CONSTRUCTION PROJECTS AS A PROTECTIVE BARRIER AT ANY SPEED.
- WHEN PROTECTIVE BARRIERS ARE NEEDED, DEVICES SUCH AS PRECAST TEMPORARY CONCRETE BARRIERS AND METAL BEAM SYSTEMS SHALL BE USED UNLESS THERE IS AN EMERGENCY.
- SAFETY DRUMS SHALL BE USED WHEN CHANNELIZATION AND DELINEATION IS THE PRIMARY NEED. DEVICES SUCH AS POTABLE BARRICADES, CONES, VERTICAL PANELS, ETC., MAY BE USED AS DIRECTED.
- ALIGNMENT OF STRIPING ON SUCCESSIVE BARRICADES SHALL BE CONSISTENT OR DOWN TOWARDS THE DIRECTION OF TRAFFIC FLOW.
- ALL REFLECTORIZED SURFACES ON DRUMS, CONES, BARRICADES, ETC., SHALL BE TYPE C HIGH INTENSITY SHEETING.

	Vehicular Traffic Control Signage
	Pedestrian Traffic Control Signage
	Construction Fence
	Construction Entrance
	Pedestrian Route



LEGEND

	WORK ZONE
	ROAD WORK AHEAD SIGN
	CHANNELIZATION DEVICE (STANDARD DRUM)
	TRAFFIC CONTROL SIGN
	TRAFFIC FLOW
	FLAGGERS
	PEDESTRIAN PATH

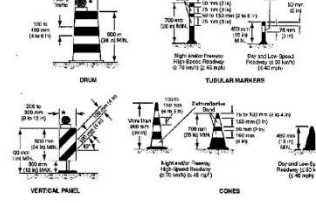
PLAN

Construction Equipment to be on site during this phase includes: Excavators, generators, drill rig, tieback machine, forklifts, loaders, dumpsters

NOTES

- TRAFFIC CONTROL PLAN WAS SOLELY DESIGNED TO CURRENT SITE CONDITIONS, THAT EXIST AS OF SEPTEMBER, 2013.
- IF SITE CONDITIONS CHANGE PRIOR TO THE START OF CONSTRUCTION, THE CONTRACTOR MUST MODIFY THE TRAFFIC CONTROL PLANS ACCORDINGLY, AND COORDINATE THE SAME WITH THE DDOT INSPECTOR.

WARNING DEVICES FOR TRAFFIC MAINTENANCE DURING CONSTRUCTION



Questions / Discussion