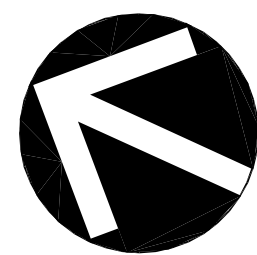
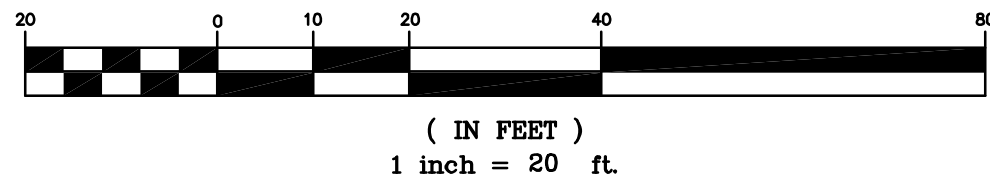


Park Van Ness - Public Space Construction Activities

	1-Mar-15			1-Apr-15			1-May-15			1-Jun-15			1-Jul-15			1-Aug-15			1-Sep-15			1-Oct-15			1-Nov-15			1-Dec-15			1-Jan-16			1-Feb-16			1-Mar-16			
Concrete Installation	June 1, 2014 - June 30, 2015																																							
Utilities Installation	March 1, 2015 - August 31, 2015																																							
Precast Installation							May 1, 2015 - July 15, 2015																																	
Façade Installation													July 1, 2015 - September 15, 2015																											
Sidewalk Demolition																August 15, 2015 - September 15, 2015																								
Partial Sidewalk Installation																				September 15, 2015 - December 31, 2015																				
Sitework Completion																				Sidewalk Partially Open - December 31, 2015										X										
																														January 1, 2016 - February 5, 2016										
																														Building Substantially Complete - February 5, 2016						X				
Punchlist/Systems Testing																																					Feb. 6, 2016 - March 5, 2016			
																																Project Completion - March 5, 2016					X			

“FOR LOCATION OF UTILITIES CALL
8-1-1 or 1-800-257-7777 OR LOG ON TO
or 48 HOURS IN ADVANCE OF ANY
WORK IN THIS VICINITY”



CONCRETE OPERATIONS: CURRENT - JUNE 30, 2015

Dumpsters

Concrete truck staging area

18' DEEP HOLE

TOWER CRANE

Concrete pouring stations

MATERIAL HOIST

4455 CONNECTICUT AVENUE N.W.
PROPOSED 11-STORY BUILDING

LOT 4
SQUARE 2046
SUBDIVISION BOOK 207 PAGE 65

YUMA STREET, N.W.
75 FOOT WIDE PUBLIC ROADWAY

A&T LOT 805
ASSESSMENT & TAXATION
PLAT 240

PROPOSED RETAINING WALL. REFER TO STRUCTURAL PLANS
FOR DETAILS AND SPECIFICATIONS (TYP). REFER TO PLANS
BY MVLA FOR FINAL TOP OF WALL ELEVATIONS (TYP).

REFER TO PLANS BY MVLA FOR FINAL
STREETSCAPE DESIGN AND GRADING
(TYP).

SWM
10 PROP. 10'X36'
STORMFILTER

VICINITY MAP
SCALE: 1"=2000'

LEGEND:

95 --- EXISTING CONTOUR LINE
96 --- PROPOSED CONTOUR LINE
▲ BUILDING ENTRANCE
+ 96.5 --- PROPOSED SPOT ELEVATION

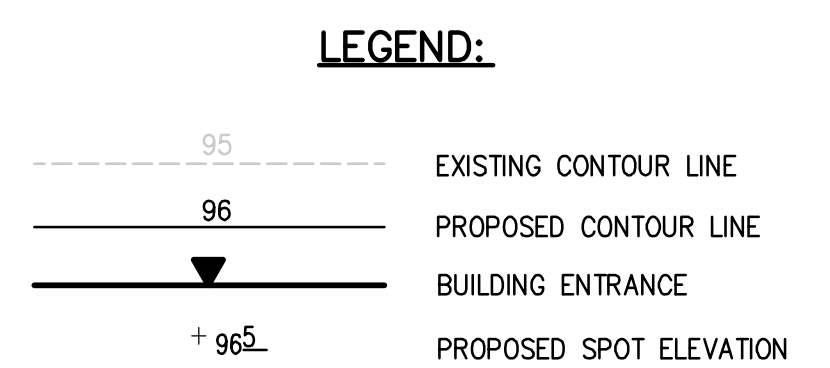
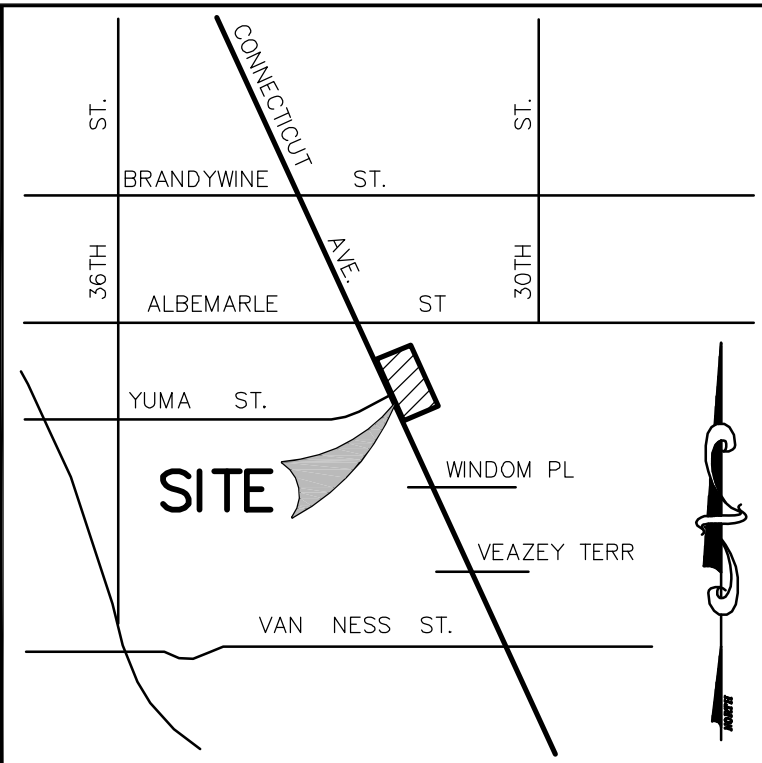
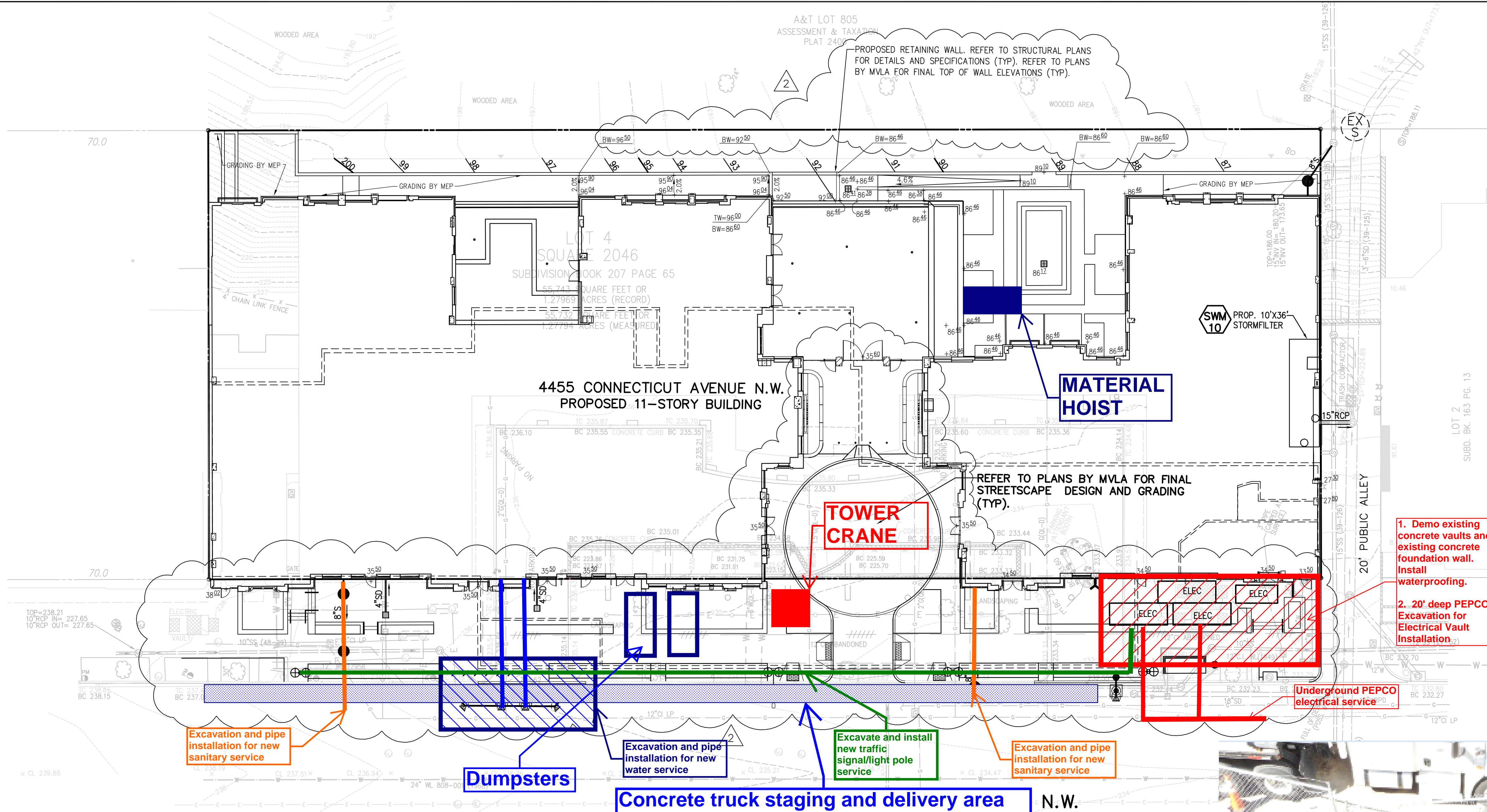
VIKA CAPITOL
REVISIONS

CCD#7	9-12-2014
DDOE SUBMISSION	09-11-2013
DCWATER APPROVAL	05-23-2013
BID SET	04-22-2013
PERMIT SET	04-12-2013
DRAFT BID SET	03-08-2013
DCWATER SUBMISSION	03-05-2013
PERMIT SET	12-20-2012
DESIGN DEVELOPMENT	11-1-2012
DATE:	JUNE 2012
DES.	SC
DWN.	CAD
SCALE:	1"=20'
PROJECT/FILE NO.	VC0150B
SHEET NO.	C-3A

SITE GRADING PLAN

4455 CONNECTICUT AVENUE,
N.W.
LOT 4, SQUARE 2046
WASHINGTON, D.C.

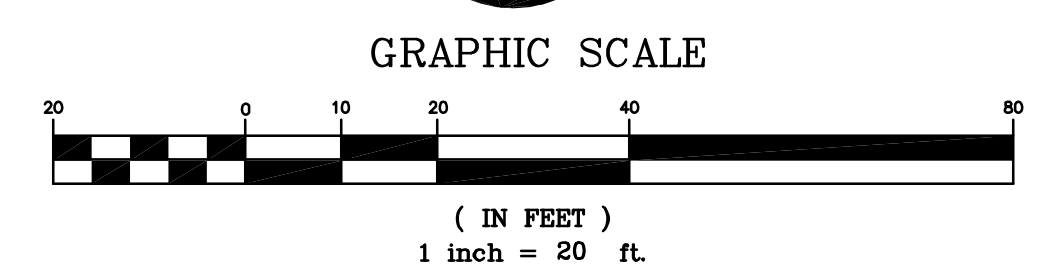
PROJECT COORDINATOR:
E-MAIL: vikacapitol.com
Vika Capitol, LLC
★ 4910 MASSACHUSETTS AVENUE, NW, SUITE 214, WASHINGTON, DC 20016 ★
★ W.W.V.I.K.A.C.A.P.I.T.O.L., C.O.M. ★
ENGINEERS ★ PLANNERS ★ LANDSCAPE ARCHITECTS ★ SURVEYORS ★ SUSTAINABLE DESIGN



UTILITY INSTALLATION: CURRENT - AUGUST 31, 2015



“FOR LOCATION OF UTILITIES CALL 8-1-1 or 1-800-257-7777 OR LOG ON TO or 48 HOURS IN ADVANCE OF ANY WORK IN THIS VICINITY”



PROJECT COORDINATOR:
E-MAIL: vikacapitol.com

Vika Capitol
ENGINEERS ★ PLANNERS ★ LANDSCAPE ARCHITECTS ★ SURVEYORS ★ SUSTAINABLE DESIGN

★ 4910 MASSACHUSETTS AVENUE, NW SUITE 214, FOSTER CITY, CA 94024
★ W.W.V.I.K.A.C.A.P.I.T.O.L., C.O.M.

4455 CONNECTICUT AVENUE, N.W.
LOT 4, SQUARE 2046
WASHINGTON, D.C.

SITE GRADING PLAN

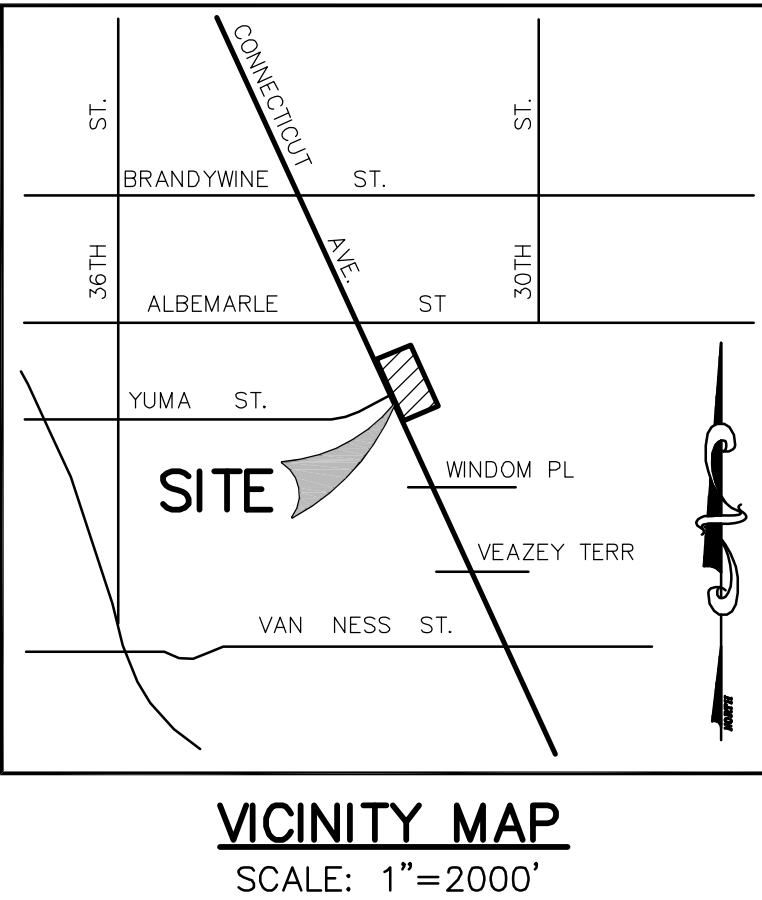
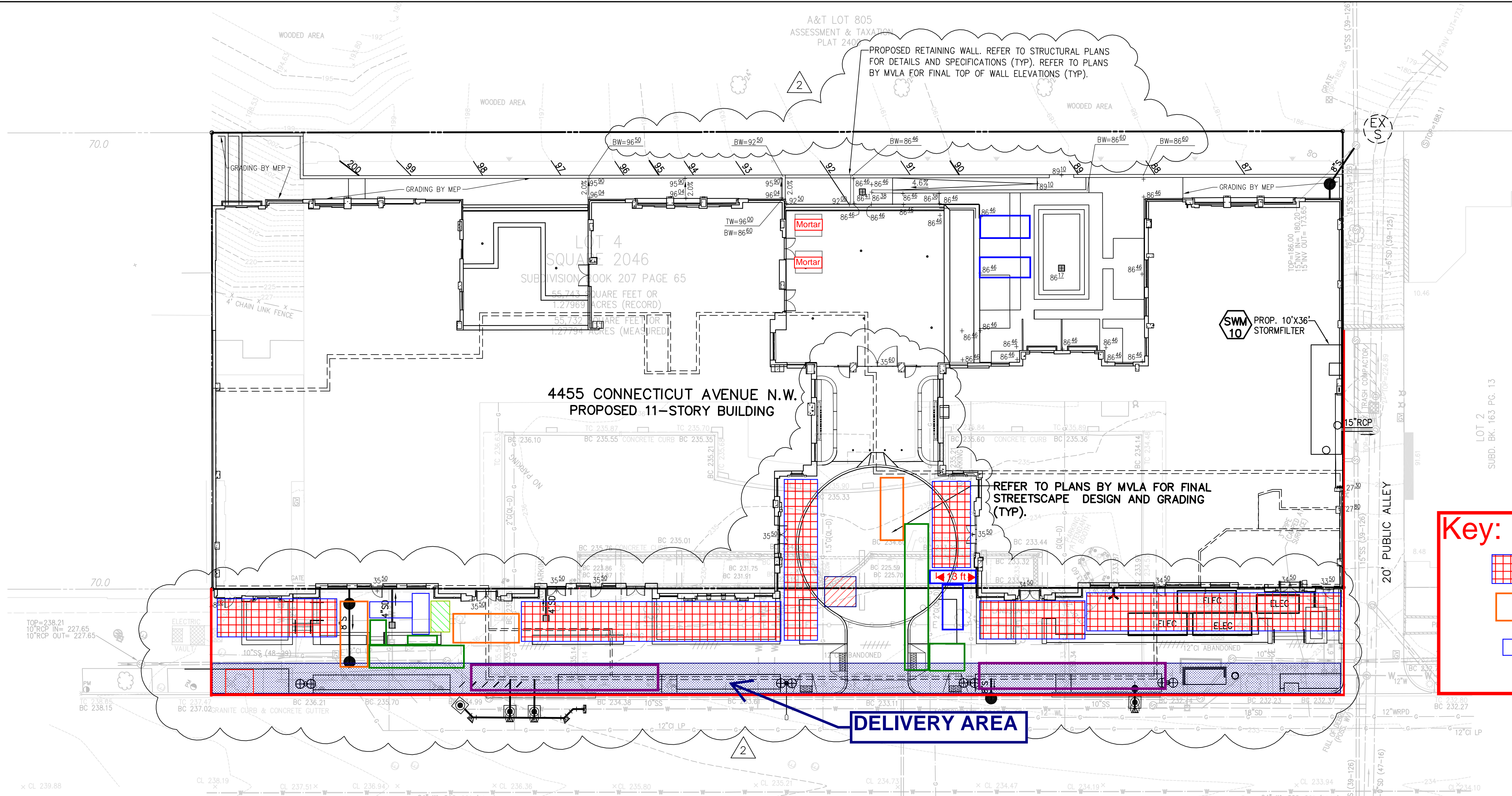
VIKA CAPITOL REVISIONS

CCD#7	9-12-2014
DDOE SUBMISSION	09-11-2013
DCWATER APPROVAL	05-23-2013
BID SET	04-22-2013
PERMIT SET	04-12-2013
DRAFT BID SET	03-08-2013
DCWATER SUBMISSION	03-05-2013
PERMIT SET	12-20-2012
DESIGN DEVELOPMENT	11-1-2012
DATE:	JUNE 2012
DES.	SC
DWN.	CAD
SCALE:	1"=20'
PROJECT/FILE NO.	VC0150B
SHEET NO.	C-3A

Page 3 of 8

[illegible]

**PRECAST INSTALLATION:
MAY 1, 2015 - JULY 15, 2015**

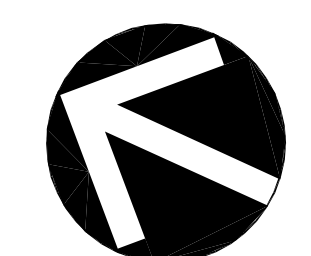
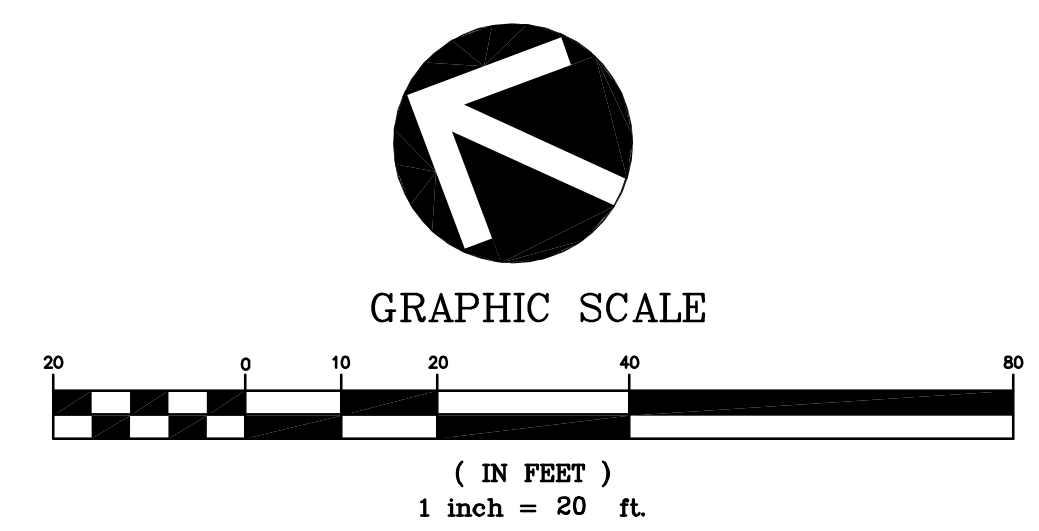


Key:

	Mast climber masonry scaffold		Semi Truck
	Dumpster 10x22		Unloading platforms
	Materials hoist and machinery		

BRICK, CAST STONE AND WINDOW INSTALLATION: JULY 1, 2015 - SEPTEMBER 15, 2015

“FOR LOCATION OF UTILITIES CALL 8-1-1 or 1-800-257-7777 OR LOG ON TO or 48 HOURS IN ADVANCE OF ANY WORK IN THIS VICINITY”



PROJECT COORDINATOR:
E-MAIL: vikacapitol.com

VIKA CAPITOL
ENGINEERS ★ PLANNERS ★ LANDSCAPE ARCHITECTS ★ SURVEYORS ★ SUSTAINABLE DESIGN

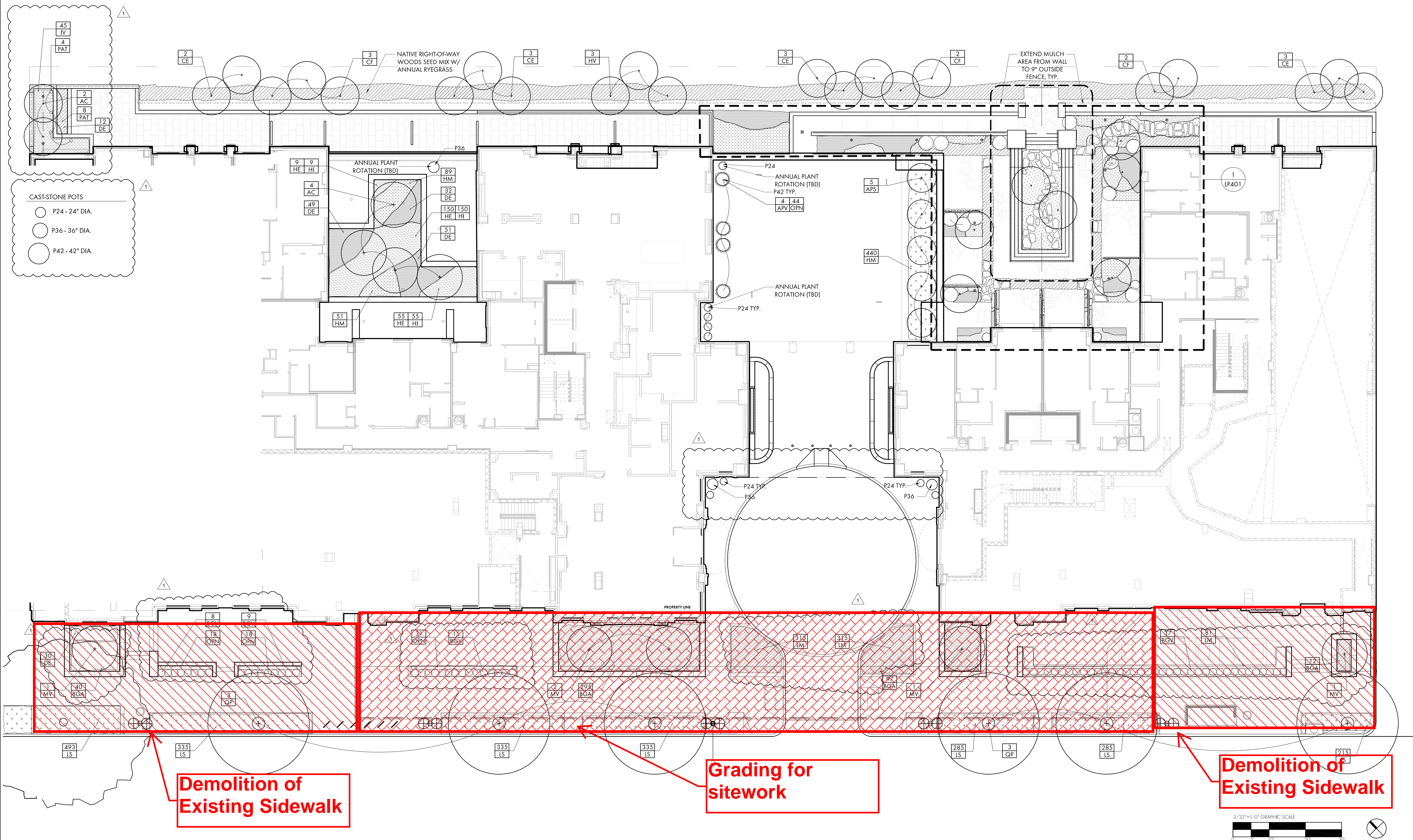
★ 4910 MASSACHUSETTS AVENUE, NW, SUITE 214, WASHINGTON, DC 20016 ★
★ WWW.VIKACAPITOL.COM ★

4455 CONNECTICUT AVENUE, N.W.
LOT 4, SQUARE 2046
WASHINGTON, D.C.

SITE GRADING PLAN

VIKA CAPITOL REVISIONS

CCD#7	9-12-2014
DDOE SUBMISSION	09-11-2013
DCWATER APPROVAL	05-23-2013
BID SET	04-22-2013
PERMIT SET	04-12-2013
DRAFT BID SET	03-08-2013
DCWATER SUBMISSION	03-05-2013
PERMIT SET	12-20-2012
DESIGN DEVELOPMENT	11-1-2012
DATE:	JUNE 2012
DES.	SC
DWN.	CAD
SCALE:	1"=20'
PROJECT/FILE NO.	VC0150B
SHEET NO.	C-3A



SIDEWALK DEMO AND GRADING: AUGUST 15, 2015 - SEPTEMBER 15, 2015

4455 Connecticut Avenue
4455 & 4489
Connecticut Avenue, NW
Washington, D.C. 20008

Torti Gallas and Partners, Inc.
1300 Spring Street,
4th Floor
Silver Spring, MD 20910
301.588.4800
www.tortigallas.com

Owner
Saul Centers, Inc.
301.986.6200

Structural Engineer
SK&A
301.881.1441

MEP Engineer
Metropolitan Engineering, Inc.
202.296.2580

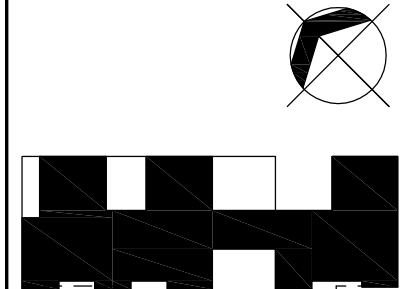
Civil Engineer
Vika Capitol, LLC
202.244.4140

Interior Design
RD Jones + Associates
202.841.1898

Landscape Architect
Michael Vergason
703.836.5557

LEED Consultant
Sustainable Design Consulting, LLC
202.667.1620

Key Plan



CONNECTICUT AVENUE NW

Issue

No.	Date
DESIGN DEVELOPMENT	08.05.12
PERMIT REVIEW	11.05.12
PERMIT REVISION	03.08.13
DRAFT BID SET	03.08.13
PERMIT SET	04.12.13
BID SET	04.24.13
ISSUE FOR PERMIT SET	05.13.13

Revisions

No.	Date
CCG-007	09.12.14

Planting Plan

Date
June 27, 2013

Principal In Charge
S.E.

Project Architect
S.A.

Approved
APV

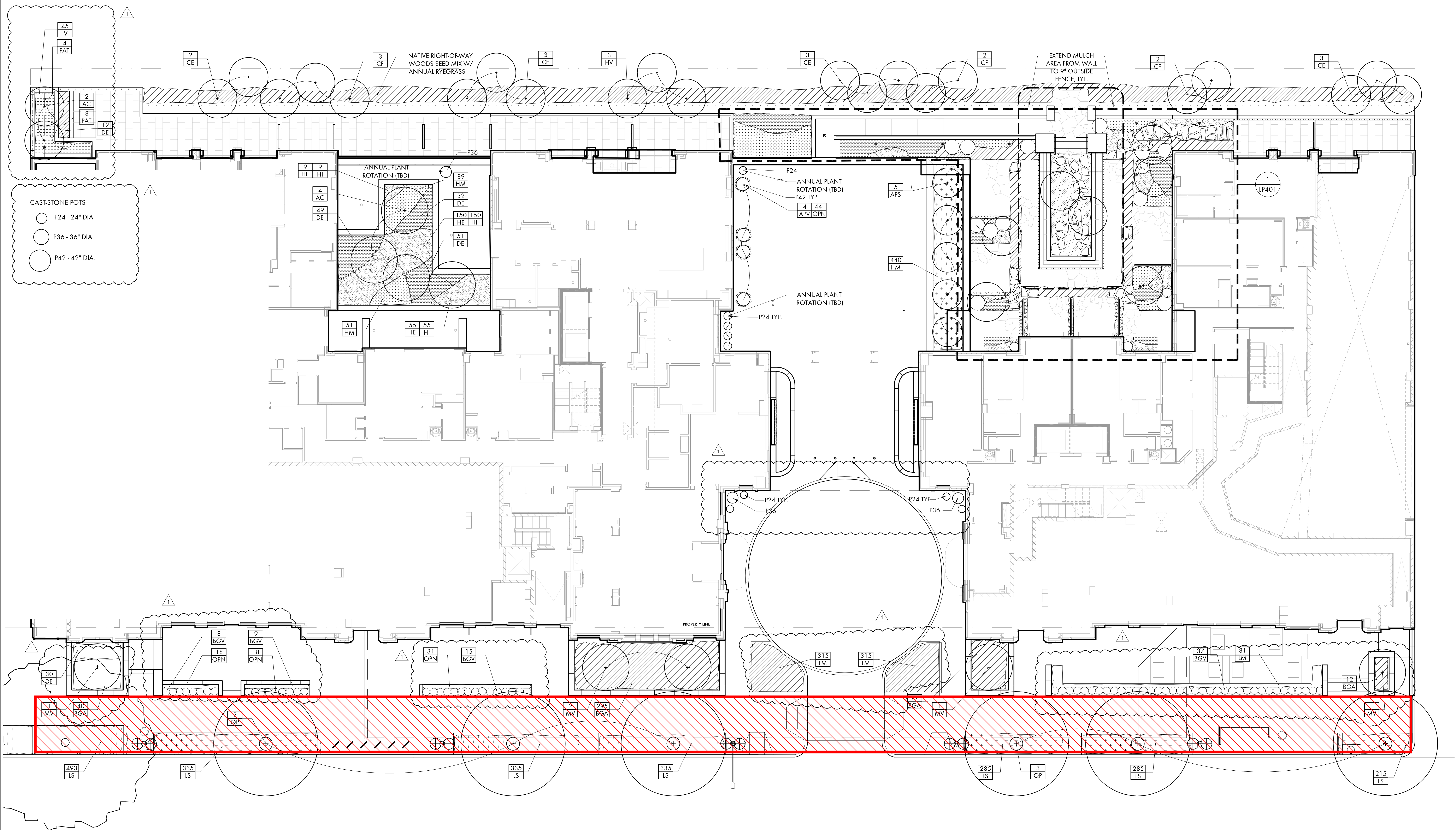
Drawn
S.A., K.T., K.W., M.H., J.B.

Job No.
11269.00

Scale

Drawing No.

LP101



PARTIAL SIDEWALK INSTALLATION - STONE SUBBASE, CONCRETE SUBBASE, CONCRETE WALLS, PAVERS, LANDSCAPING, CURBS, HANDRAILS, TRAFFIC SIGNALS, STREETLIGHTS, CROSSWALK STRIPING, MILL AND OVERLAY: SEPTEMBER 15, 2015 - DECEMBER 31, 2015

4455 Connecticut Avenue
4455 & 4489
Connecticut Avenue, NW
Washington, D.C. 20008

Torti Gallas and Partners, Inc.
1300 Spring Street,
4th Floor
Silver Spring, MD 20910
301.588.4800
www.tortigallas.com

Owner
Saul Centers, Inc.
301.986.6200

Structural Engineer
SK&A
301.881.1441

MEP Engineer
Metropolitan Engineering, Inc.
202.296.2580

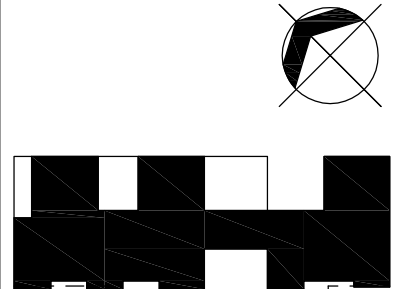
Civil Engineer
Vika Capitol, LLC
202.244.4140

Interior Design
RD Jones + Associates
202.841.1898

Landscape Architect
Michael Vergason
703.836.5557

LEED Consultant
Sustainable Design Consulting,
LLC
202.667.1620

Key Plan



CONNECTICUT AVENUE NW

Issue

No.	Date
DESIGN DEVELOPMENT	08.05.12
PERMIT REVIEW	11.05.12
PERMIT REVISION	12.20.12
DRAFT BID SET	03.08.13
PERMIT SET	03.08.13
BID SET	04.12.13
ISSUE FOR PERMIT SET	04.24.13
	05.13.13

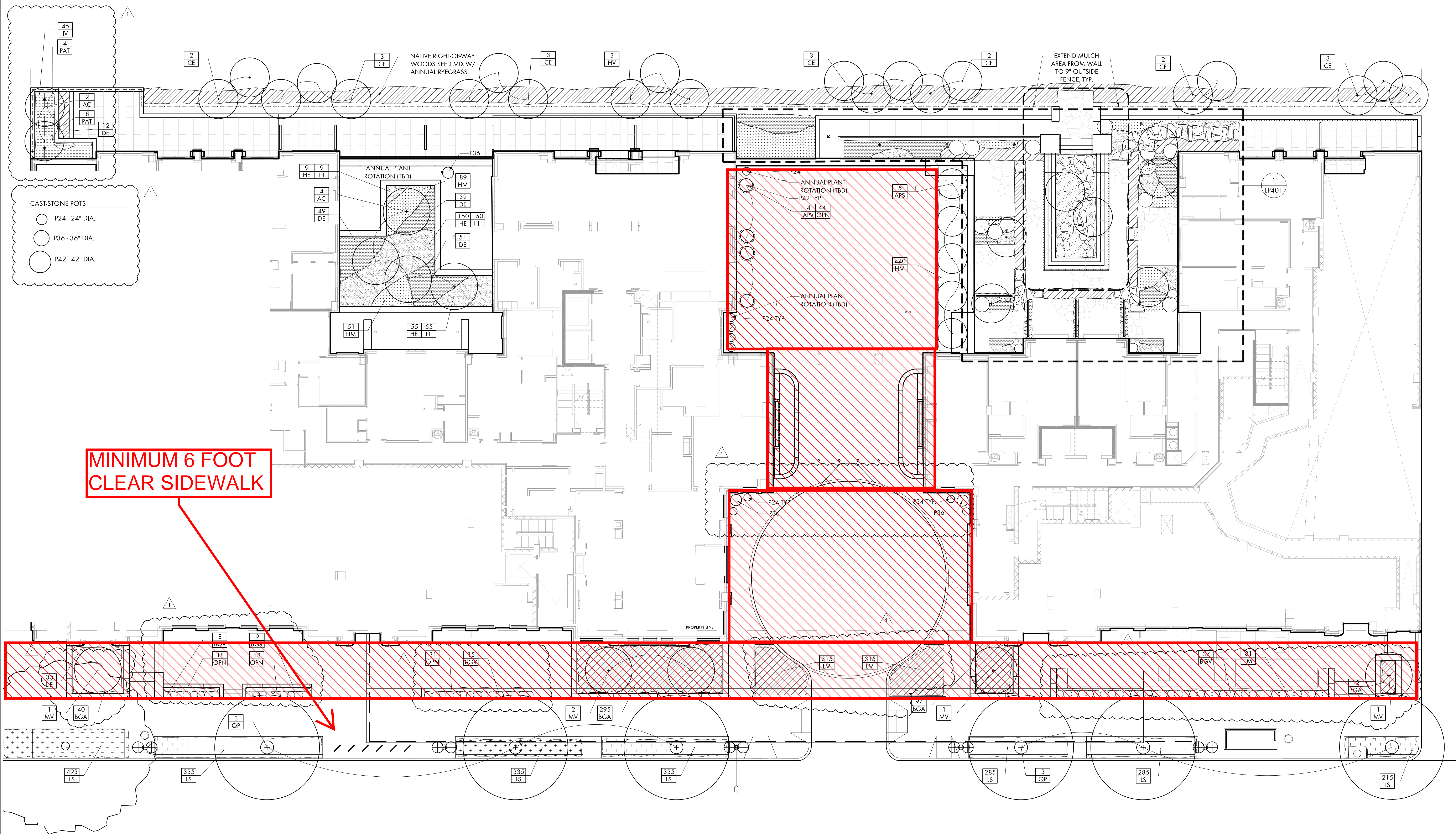
Revisions

No.	Date
CCG-007	09.12.14

Planting Plan

Date
June 27, 2013
Principal In Charge
S.E.
Project Architect
S.A.
Approved
APV
Drawn
S.A., K.T., K.W., M.H., J.B.
Job No.
11269.00
Scale

Drawing No.
LP101



FINAL SIDEWALK INSTALLATION - STONE SUBBASE, CONCRETE SUBBASE, CONCRETE WALLS, PAVERS, LANDSCAPING, CURBS, HANDRAILS, TRAFFIC SIGNALS, STREETLIGHTS, CROSSWALK STRIPING, MILL AND OVERLAY: JANUARY 1, 2016 - FEBRUARY 5, 2016

4455 Connecticut Avenue
4455 & 4489
Connecticut Avenue, NW
Washington, D.C. 20008

Torti Gallas and Partners, Inc.
1300 Spring Street,
4th Floor
Silver Spring, MD 20910
301.588.4800
www.tortigallas.com

Owner
Saul Centers, Inc.
301.986.6200

Structural Engineer
SK&A
301.881.1441

MEP Engineer
Metropolitan Engineering, Inc.
202.296.2580

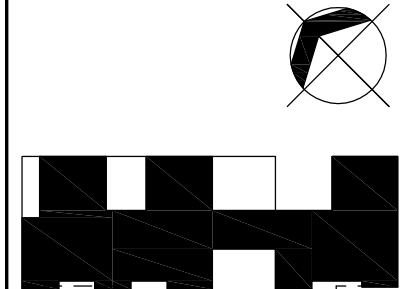
Civil Engineer
Vika Capitol, LLC
202.244.4140

Interior Design
RD Jones + Associates
202.841.1898

Landscape Architect
Michael Vergason
703.836.5557

LEED Consultant
Sustainable Design Consulting, LLC
202.667.1620

Key Plan



CONNECTICUT AVENUE NW

Issue

No.	Date
DESIGN DEVELOPMENT	08.05.12
PERMIT REVIEW	11.05.12
PERMIT REVISION	12.20.12
DRAFT BID SET	03.08.13
PERMIT SET	03.08.13
BID SET	04.12.13
ISSUE FOR PERMIT SET	04.24.13
	05.13.13

Revisions

No.	Date
CCG-007	09.12.14

Planting Plan

Date
June 27, 2013

Principal In Charge
S.E.

Project Architect
S.A.

Approved
APV

Drawn
S.A., K.T., K.W., M.H., J.B.

Job No.
11269.00

Scale