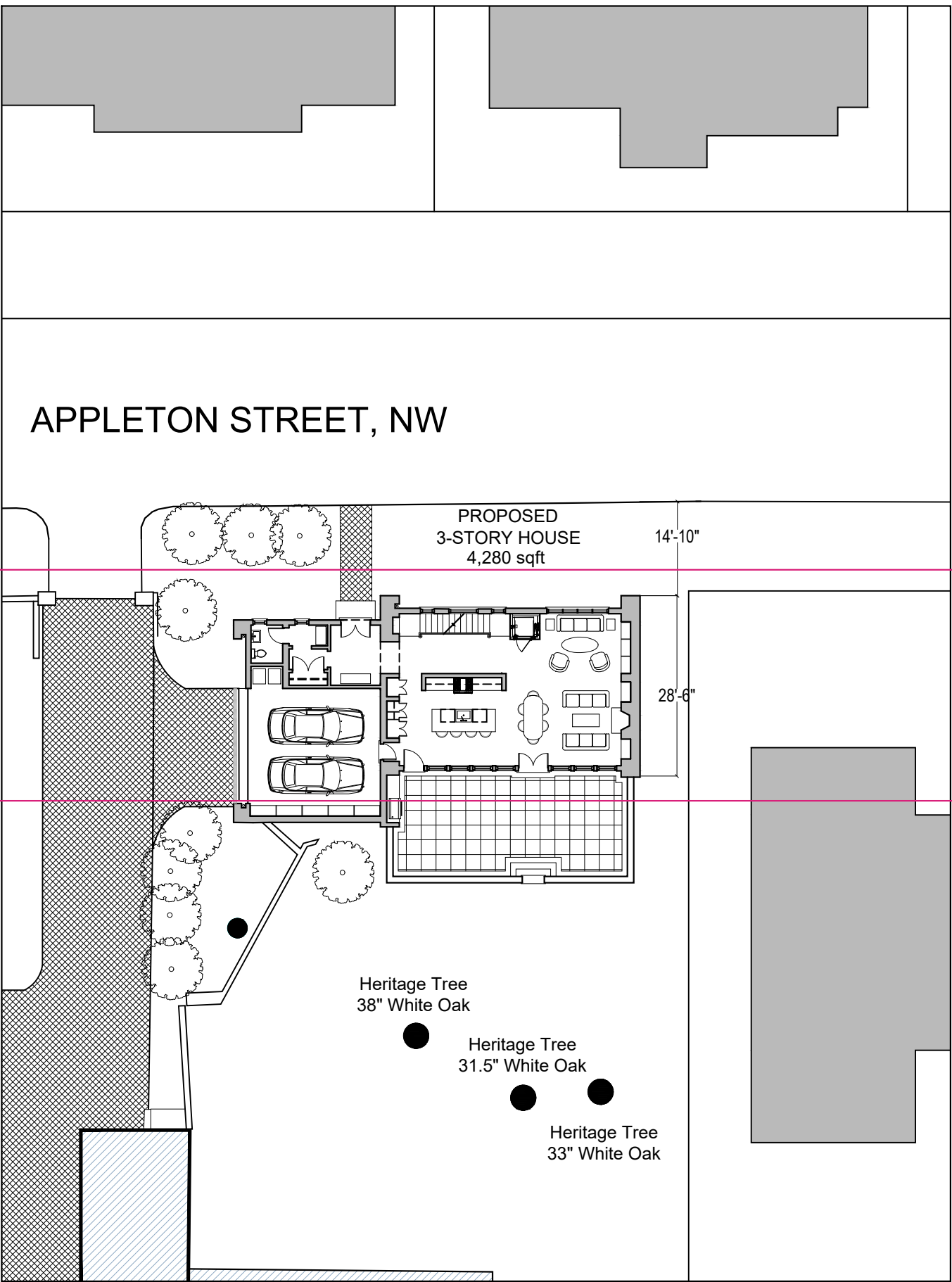


PREVIOUS



PROPOSED

CHRISTIAN ZAPATKA ARCHITECT, PLLC

1656 33rd STREET NW WASHINGTON DC 20007 202 333 2735

© DRAWING PROTECTED BY COPYRIGHT. THIS DRAWING CANNOT BE DISTRIBUTED OR REPRODUCED WITHOUT WRITTEN PERMISSION FROM CHRISTIAN ZAPATKA ARCHITECT, PLLC.

PROJECT:

SOAPSTONE VALLEY VENTURES

3101 ALBEMARLE ST, NW

WASHINGTON D.C. 20008

SQ : 2041 LOT : 0839

DRAWING TITLE:

SINGLE FAMILY CONTEXT PLAN

SUBMISSION:

CONCEPT

DATE: OCTOBER 2, 2017

SCALE: 3/64" = 1'-0"