

ANC 3F05 PEDESTRIAN AND TRAFFIC SAFETY MEETING

The Methodist Home, 26 March 2012

Manolis Priniotakis, Commissioner 3F05

Agenda

- Welcome and Introductions
- Objectives
- What You Can Do
- 3F05 Alley Initiative
- Key Locations
- Review of Discussion
- Adjourn



Introductions

Manolis Priniotakis

ANC Commissioner 3F05

Elected in 2012

Sworn in on January 2, 2013

Chair, Education Committee

Contact:

Manolis@ManolisANC.com

(202) 746-6943

<http://www.ManolisANC.com>

Objectives

- Raise Awareness
- Receive Input
- Recommend Solutions
- Develop a Path Forward



Important Documents

- DDOT Rock Creek West II Livability Study
 - Good for understanding differences (arterial, collector, local, etc.)
- Murch Safe Routes to School Plan
- Connecticut Avenue Pedestrian Action (CAPA) Study

Rock Creek West II
Livability Study

Final Report
February 2011



What You Can Do

- DDOT has expected service levels for the following issues:
 - Alley Repair
 - Curb and Gutter Repair
 - Pavement Markings (crosswalks, lane dividers, etc.)
 - Pothole Repair
 - Sidewalk Repair
 - Street and Alley Light Repair
 - Street Repair
 - Street Resurfacing
 - Street Signs
 - Traffic Calming
 - Traffic Signals
- **TREES!**

The 3F05 Alley Initiative

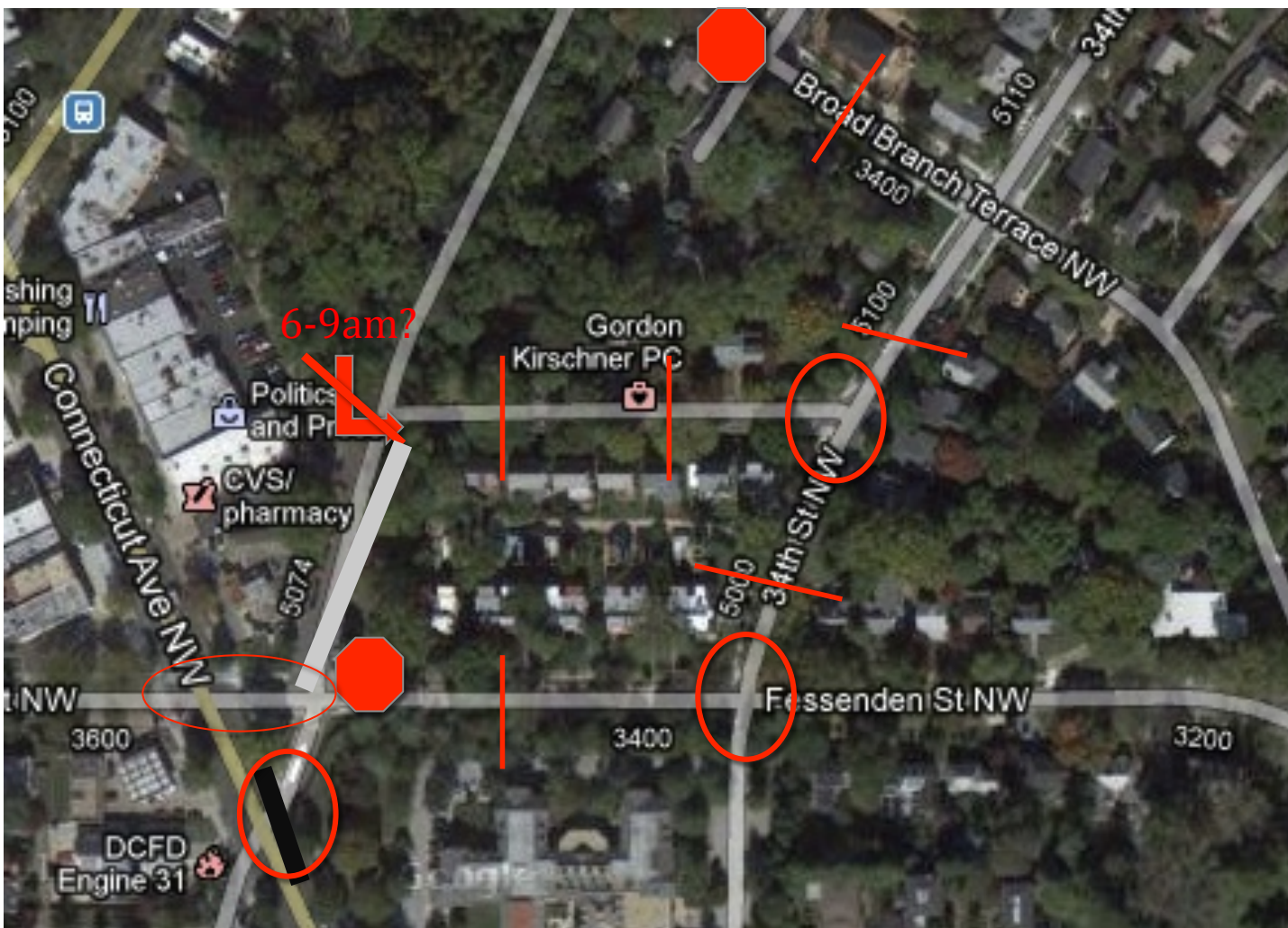
- At least 11 alleys in 3F05
- Varying conditions
- Many common problems
 - Crumbling pavement
 - Drainage problems
 - Ruts
 - General issue of impervious surface
- Goals
- Optimal Outcomes

Key Location #1: 36th/Fessenden/Conn

- Concerns: Lots!
 - Probs on Conn.
 - Right turn onto Fess.
 - Left turn onto Conn.
 - Speed on Conn.
 - Speed on Garrison
 - Speed on 34th St
 - Right turn onto 34th
 - Speed on Fessenden
 - Left turn on B/B Terr.
 - Cut through CVS
 - General condition
 - Street markings



36th/Fessenden/Conn (Cont.)



36th/Fessenden/Conn (Cont.)

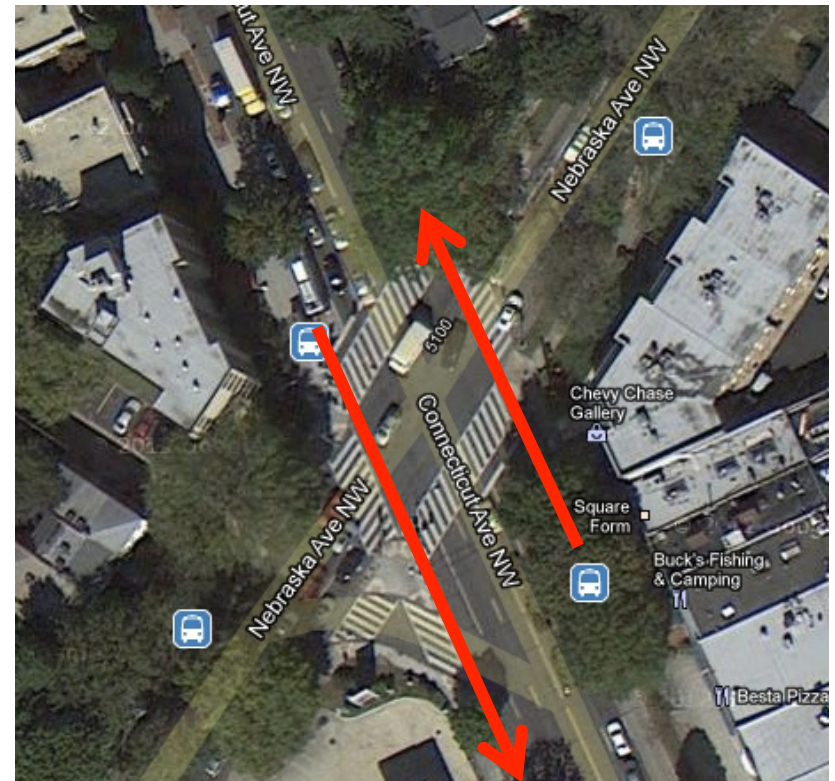


36th/Fessenden/Conn. (Cont.)



Key Location #2: Conn & Neb Aves

- Concerns:
 - Speeds crossing Connecticut
 - Right turn onto Nebraska
 - Location of bus shelters
 - General pedestrian danger
- Possible solutions
 - Left-turn lanes
 - Eliminate green arrow on Neb.
 - Move bus shelters



Key Location #3: Chesapeake and Conn.

- Concerns:
 - Right turn onto Conn.
 - Crossing
- Possible solutions
 - Curb extensions
 - CaBi station
- Impacts
 - Reduced parking



Key Location #4: Nebraska Ave.

- Concerns: High Speeds
 - Particularly NE bound
 - Crossing Conn Ave.
 - Evacuation route
- Existing Measures:
 - Red Light Camera
 - Not much else ...
- Possible Solutions:
 - Speed camera
 - Speed reduction from



Key Location #5: Davenport St.

- Featured in RCWII

- Recommended:
 - High-Vis X-walk
 - Curb extensions



- High speeds still a problem in a school zone
- Traffic calming options
 - Curb extensions
 - Humps or bumps

Others Already Noted (Outside 3F05)

- Ellicott St.
- Albemarle and Connecticut
 - Cut through the Connecticut House
 - Left turn lane onto Connecticut
- Width of crosswalks

Anyplace else?

Review of Discussion

Adjourn

- Next meeting: Mid-June (date TBD)
- Focus: Energy/Environmental Programs

Thanks!